

S/TIP Planning Process

MATT PITLOCK – MDOT RURAL TASK FORCE TEAM

What is a Transportation Improvement Program (TIP)?

- ▶ Transportation Improvement Program (TIP) is a listing of transportation projects covering a period of four years.
- ▶ Must include all projects utilizing Federal Funds
- ▶ Must include all projects designated as regionally significant
- ▶ MPOs Process TIP amendments and TIP changes through their Technical Advisory Committee (TAC) and Policy Committee (PC) Meetings

STIP vs TIP

- ▶ The TIP Process is for federally funded and regionally significant projects inside of an MPO Planning Area.
- ▶ The STIP process is for federally funded and regionally significant projects outside of an MPO Planning Area.

What is a Metropolitan Planning Organization (MPO)?

- ▶ MPOs are agencies designated to carry out the metropolitan transportation planning process for urbanized areas with more than 50,000 people.
- ▶ The Census determines the Adjusted Urban Census Boundary (ACUB).
- ▶ MPO Metropolitan Planning Area (MPA) must include the ACUB and any area anticipated to be classified as a Census Urban Area in the next 20 years.
- ▶ The MPA can extend beyond these required areas, many extend to county borders.



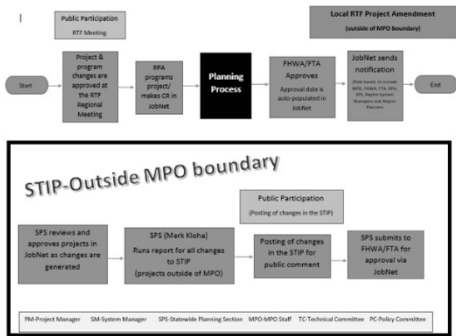
How the S/TIP Process Affects the RTF Program

- ▶ RTF Projects utilizing Federal Funds will be included in an MPO TIP or the Rural STIP based on Geography
- ▶ Projects that do not include federal funds are S/TIP exempt unless they are deemed "regionally significant"
- ▶ Projects not utilizing federal funds (STP), but include State D funds will be programmed into JobNet as S/TIP exempt.
 - ▶ This accommodates project obligation, award, closeout and monitoring

How the S/TIP Process Affects the RTF Program

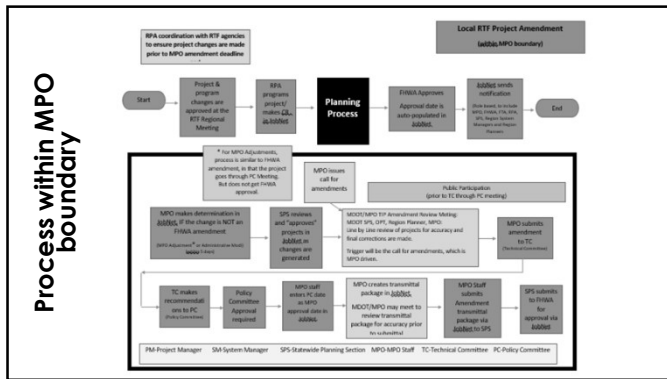
- ▶ Projects can **NOT** cross MPO MPA boundaries
 - ▶ If you plan a project with limits in multiple MPO MPAs or in an MPO MPA and the rural STIP boundary you must split the project at the boundary or boundaries
 - ▶ Each section must be programmed into JobNet as a separate project and will require a separate project application to LAP
 - ▶ The separate projects can be tied together for the contracting process
 - ▶ Because they are separate projects, funds cannot move from one project to the other

Rural Projects: Outside MPO boundary



Rural STIP Amendment Schedule

- ▶ Every other Month
 - ▶ In your handouts
 - ▶ If you miss the submission deadline you will have to wait for the next cycle (two months) for your project amendment to be approved
- ▶ Consider the Rural STIP amendment schedule when arranging RTF meetings
- ▶ Allow time for submission of 1799/1797 Data Sheet and for the RPA to program in JobNet



MPO TIP amendment Cycle

- ▶ If your RTF boundary overlaps an MPO MPA also consider the MPO TIP amendment schedule when arranging RTF meetings
 - ▶ MPO TIP amendment schedule varies by MPO
 - ▶ Contact the MPO staff for their schedule
- ▶ Allow time for submission of 1799/1797 Data Sheet and for the RPA to program in JobNet

Strategies for managing amendments

- ▶ Know if your project is in a GPA or if it is a line item in the S/TIP
- ▶ Understand the triggers for a federal amendment (Handout)
- ▶ An MPO can impose additional criteria that would require approval by their Policy Board (MPO Adjustment)
 - ▶ Make sure you know if your MPO imposes MPO adjustments and what the criteria is

Strategies for managing amendments (Cont.)

- ▶ Get project updates programmed in JobNet as soon as possible, even if you don't have complete information
 - ▶ If your estimate is close enough the correction might just be an Administrative Modification which does not require federal approval
- ▶ Insignificant changes are administrative modifications (Handout) and do not require a federal amendment
- ▶ Project changes are cumulative
 - ▶ If you make a 20% change in project cost and then 10% (equals 30%) it will trigger a federal amendment

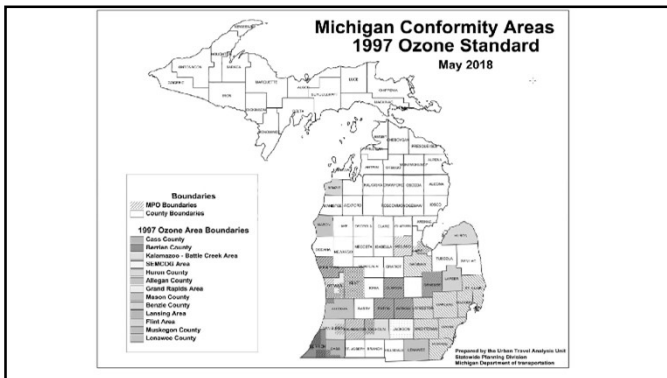
Additional TIP Amendment Process Information

- ▶ An outreach training regarding the TIP amendment process and how it effects RTF projects in the MPO MPA was held on July 23, 2018
- ▶ The handouts and record of the training can be found at www.michiganrtf.com

Air Quality and The S/TIP

Air Quality **only** effects conformity areas

Benzie County Mason County
 Huron County Muskegon County
 Allegan County Cass County
 Lenawee County
 Genesee and Lapeer Counties
 Kent and Ottawa Counties
 Van Buren, Kalamazoo, and Calhoun Counties
 Clinton, Ingham, and Eaton Counties (all of RTF 6)
 All of RTF 1



Effect of Air Quality Conformity on RTF program (Air Quality Conformity Areas only)

- ▶ RTF Projects will be included in an MPO TIP or the Rural STIP based on Geography
 - ▶ RTF members do not need to participate in the IAWGs
- ▶ Projects that increase or decrease capacity must be included in a conformity analysis
 - ▶ This is referred to as a non-exempt project
 - ▶ All other projects are exempt from conformity analysis

Effect of Air Quality Conformity on RTF program (Air Quality Conformity Areas only)

- ▶ All projects listed in a S/TIP amendment must be reviewed by an Interagency Work Group (IAWG) and judged as exempt or non-exempt
 - ▶ This will be coordinated as part of the amendment process for Conformity areas
- ▶ Any S/TIP amendment with projects that require conformity analysis will be delayed while this analysis is completed, 4-6 weeks
